



La VERNEJA

CORRALA DE
BARCELONA EUROPEAN 18

Biophilic Industrialization, Structural Logic, and Assembly as Care

We Build to Assemble, never to impose. Prefabrication as care. Structure as invitation. Construction as ecosystem.

This building is not cast, it is placed.

Its structure is entirely made of cross-laminated timber (CLT): a monomaterial system that is structural, breathable, and reversible.

Prefabrication is not merely speed. It's discipline:

Panels arrive pre-cut, pre-finished, and ready for dry assembly.

No wet works. No casting. No curing delays.

Assembly becomes choreography:

A truck arrives. A panel is lifted. A worker rotates a screw. A wall stands. A lifted frame that lets the soil breathe. A readable tectonic logic, open to reuse and transformation. A support structure for both community life and ecological repair

CLT: Monomaterial and Monolithic

CLT performs across multiple roles:

Structure: Load-bearing, stable, seismic-resistant.

Envelope: High insulation, low thermal bridging.

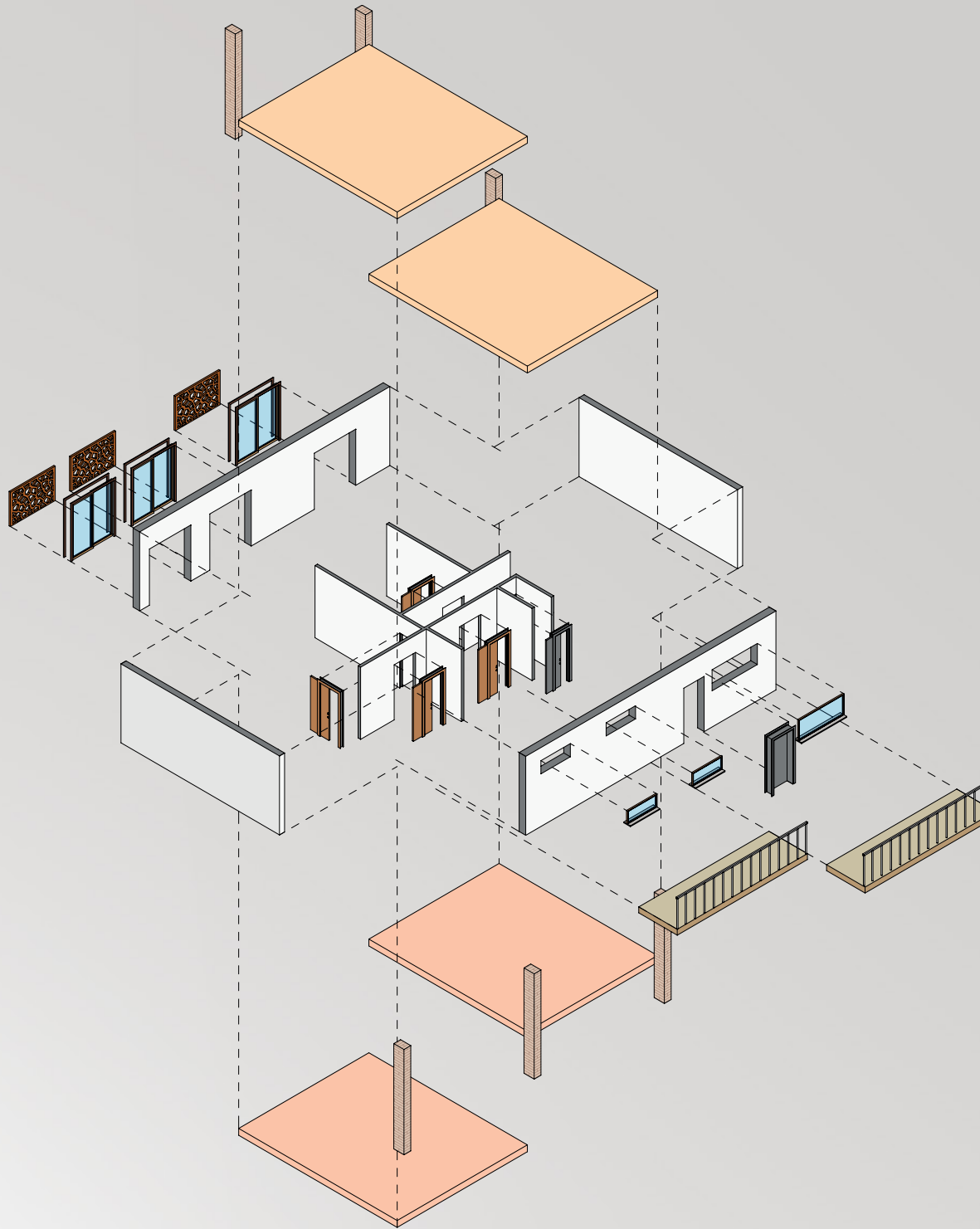
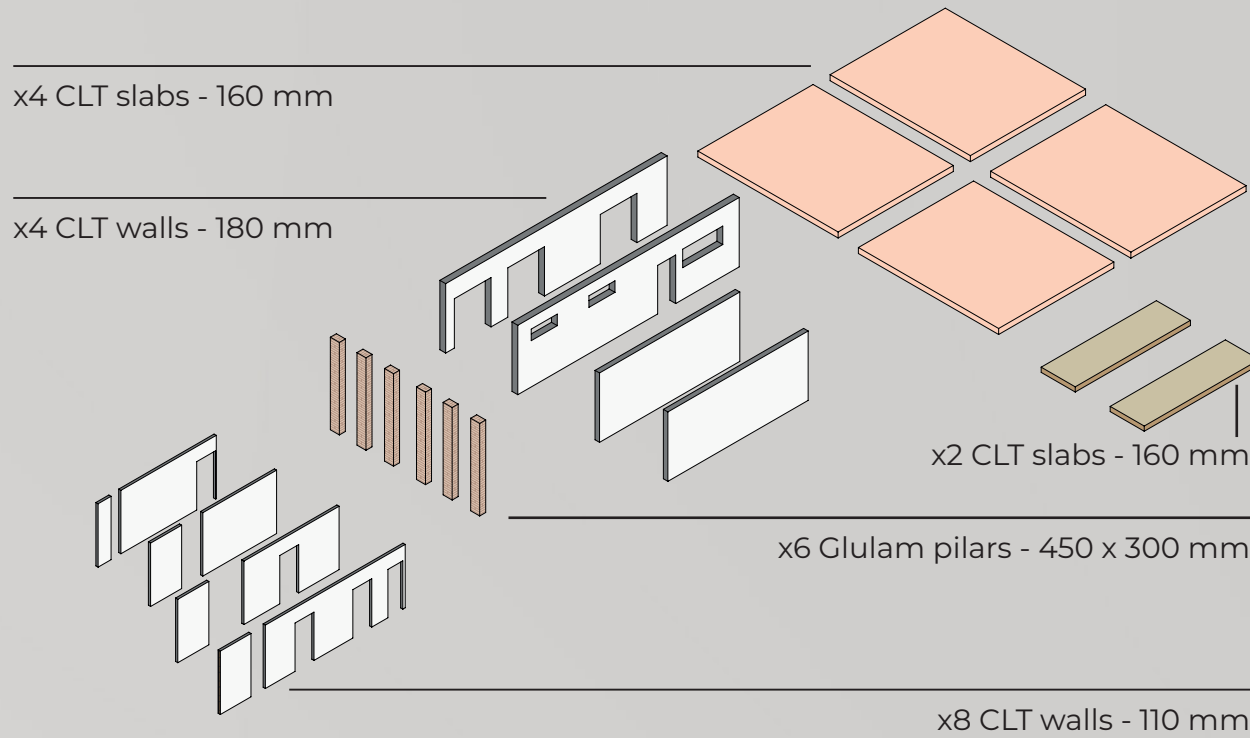
Interior finish: Exposed wood grain, acoustic comfort.

Atmosphere: Warmth, tactile and olfactory presence.

Fire resistance is built into the material's thickness and charring behavior, no toxic coatings required. Thermal efficiency is boosted through breathable façades and natural fiber insulation.

This is not nostalgia, it's bio-industrial logic: Monomaterial, low-carbon, and reversible.

1 x Housing Unit parts:

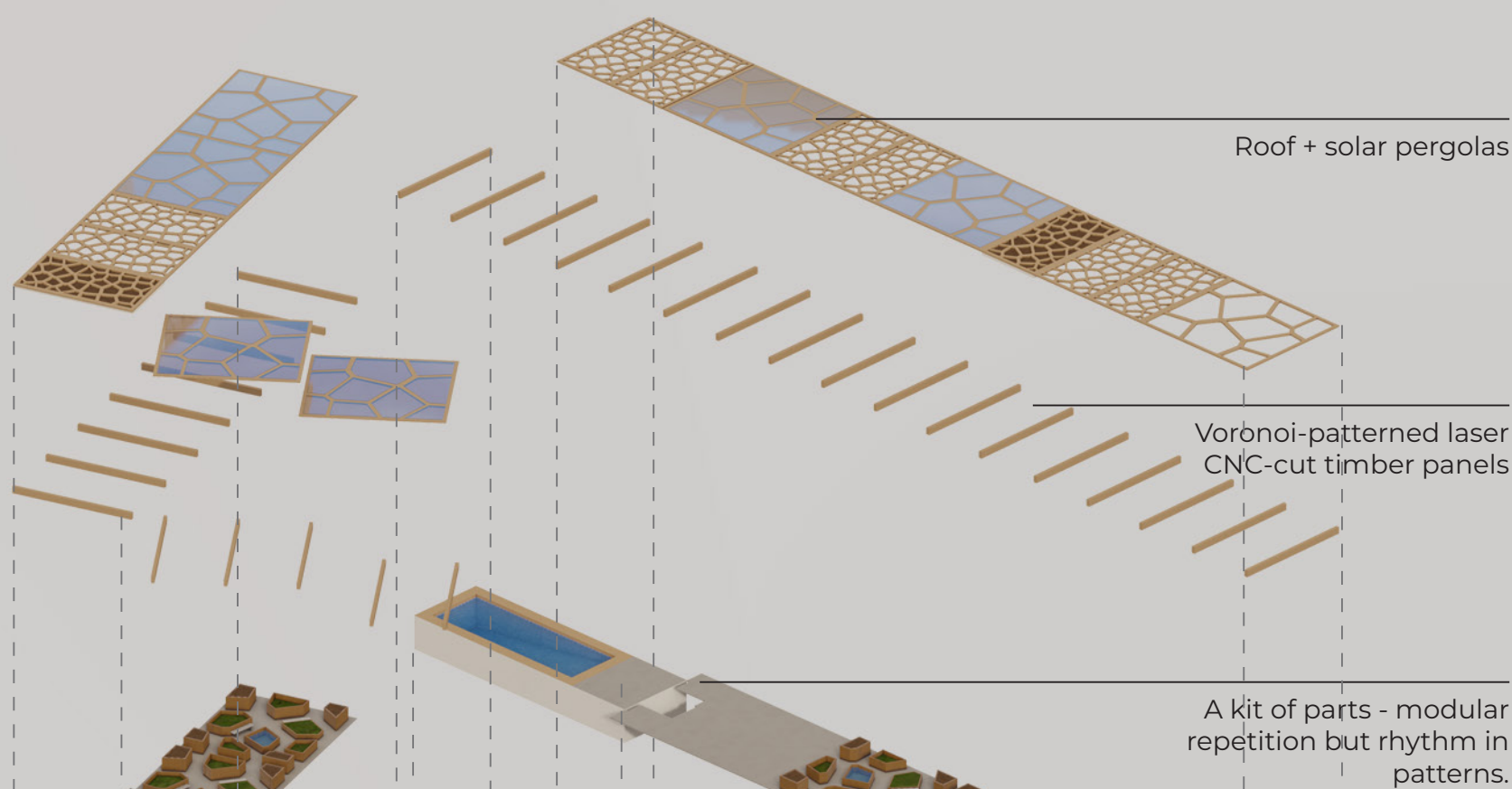
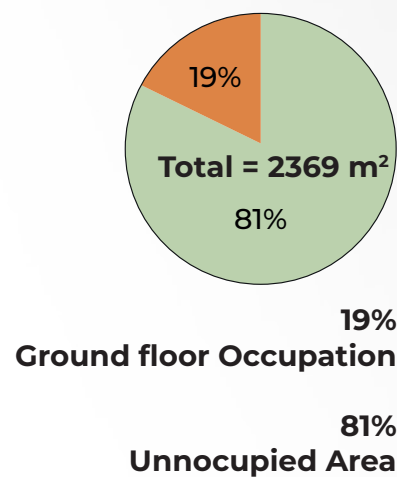
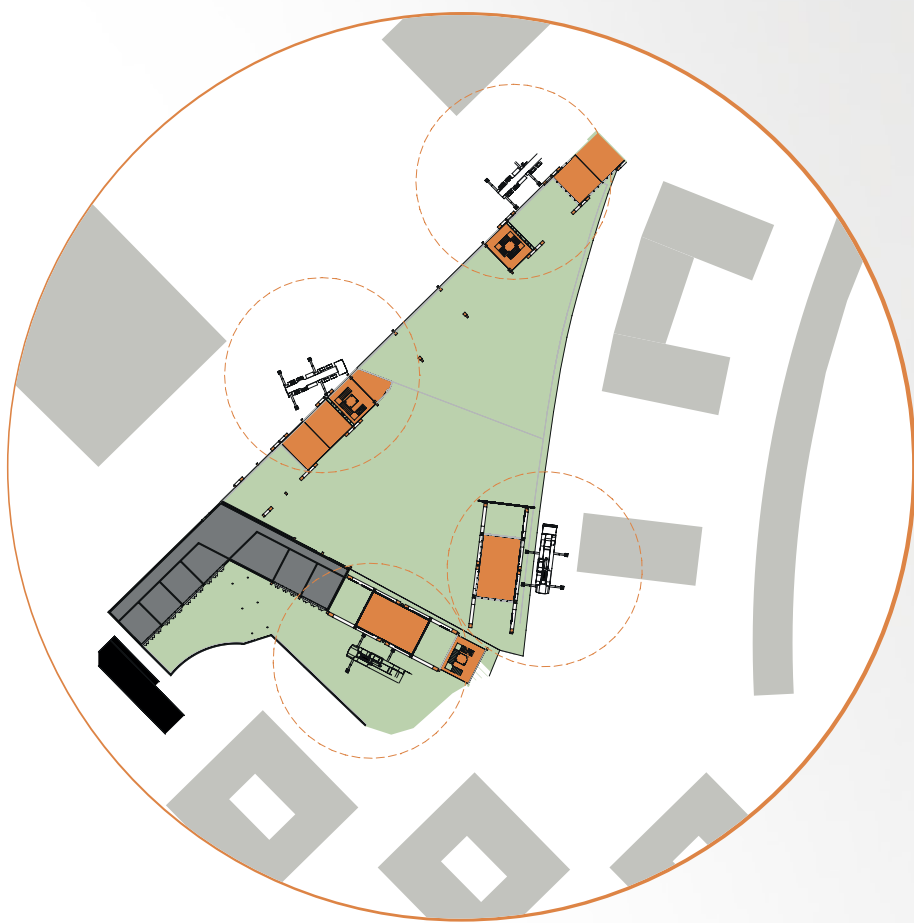
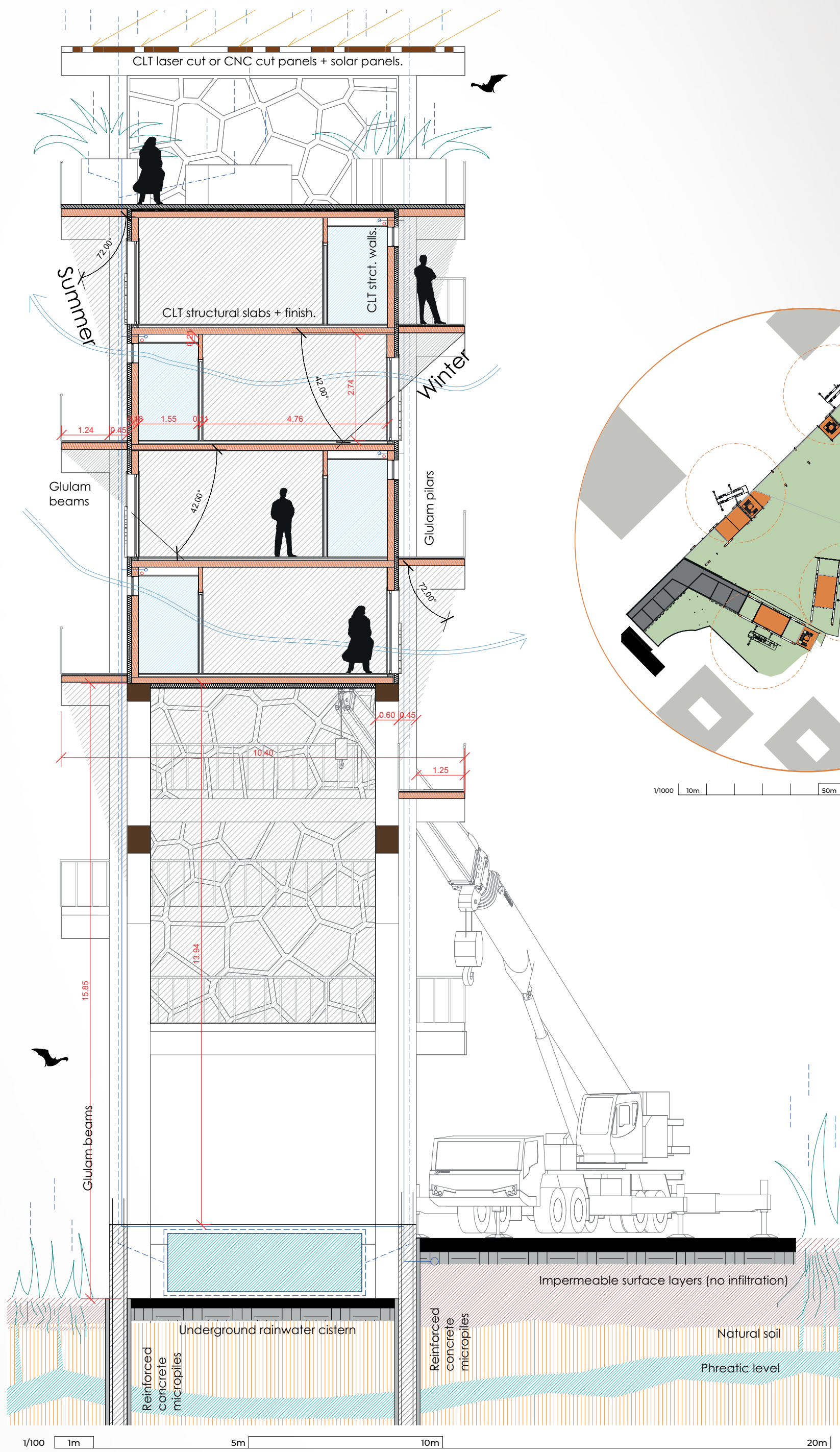


Housing Unit Breakdown

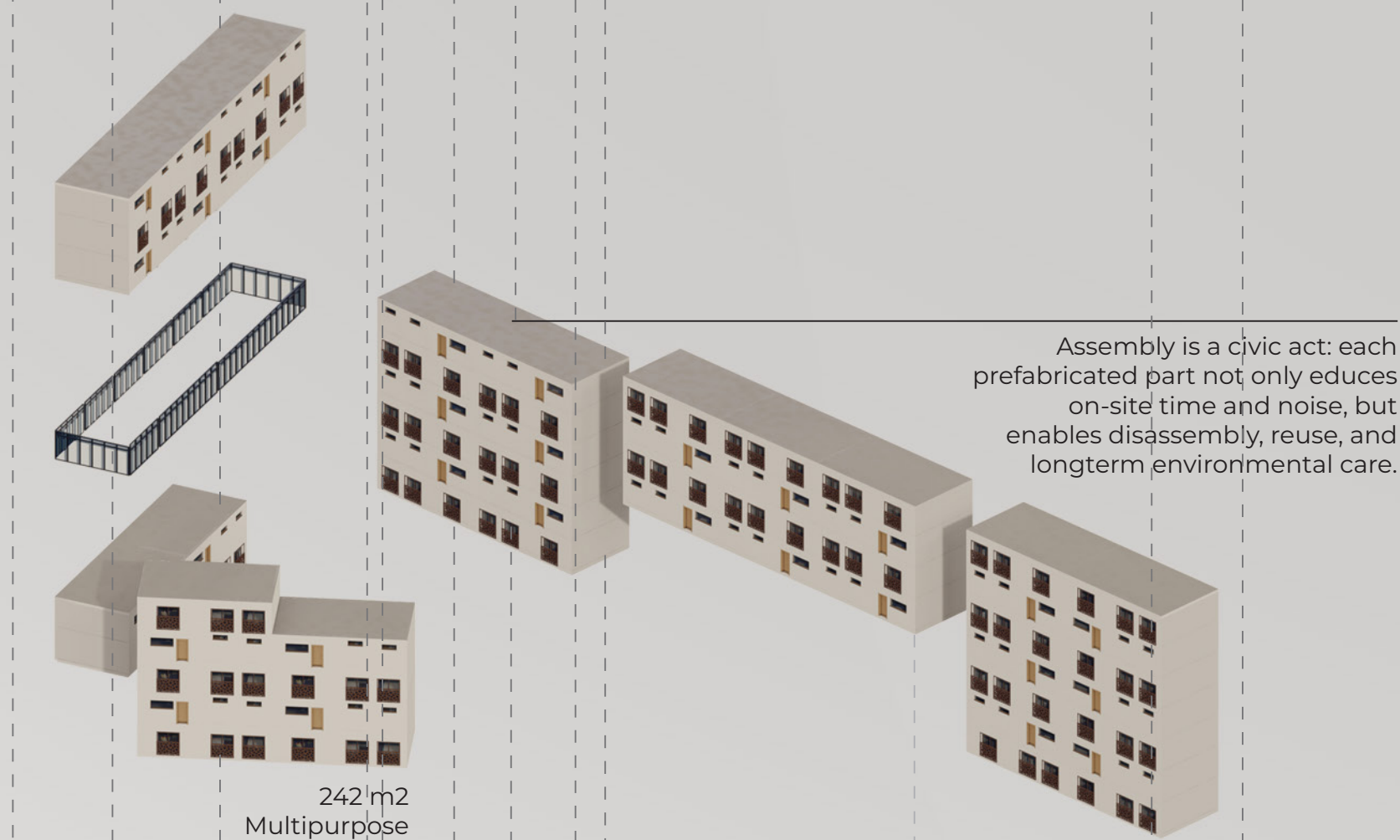
One dwelling. Assembled from CLT slabs, structural walls, interior partitions, and façade elements. Each piece arrives with openings ready for windows, doors, and services.

Every element is counted, measured, and replaceable, a clear inventory that simplifies cost, logistics, and future repairs.

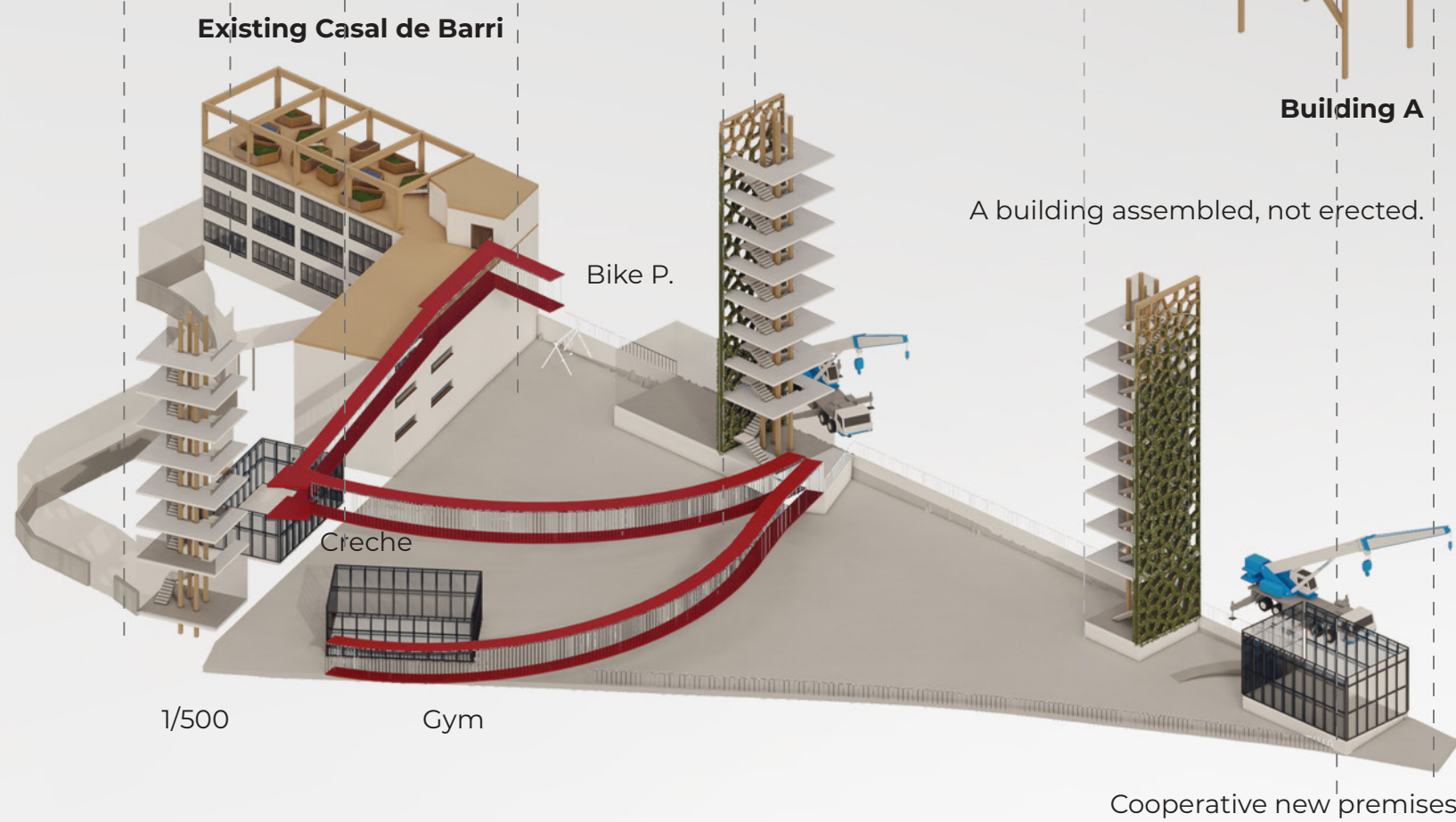
This diagram reveals the hidden anatomy of the home.



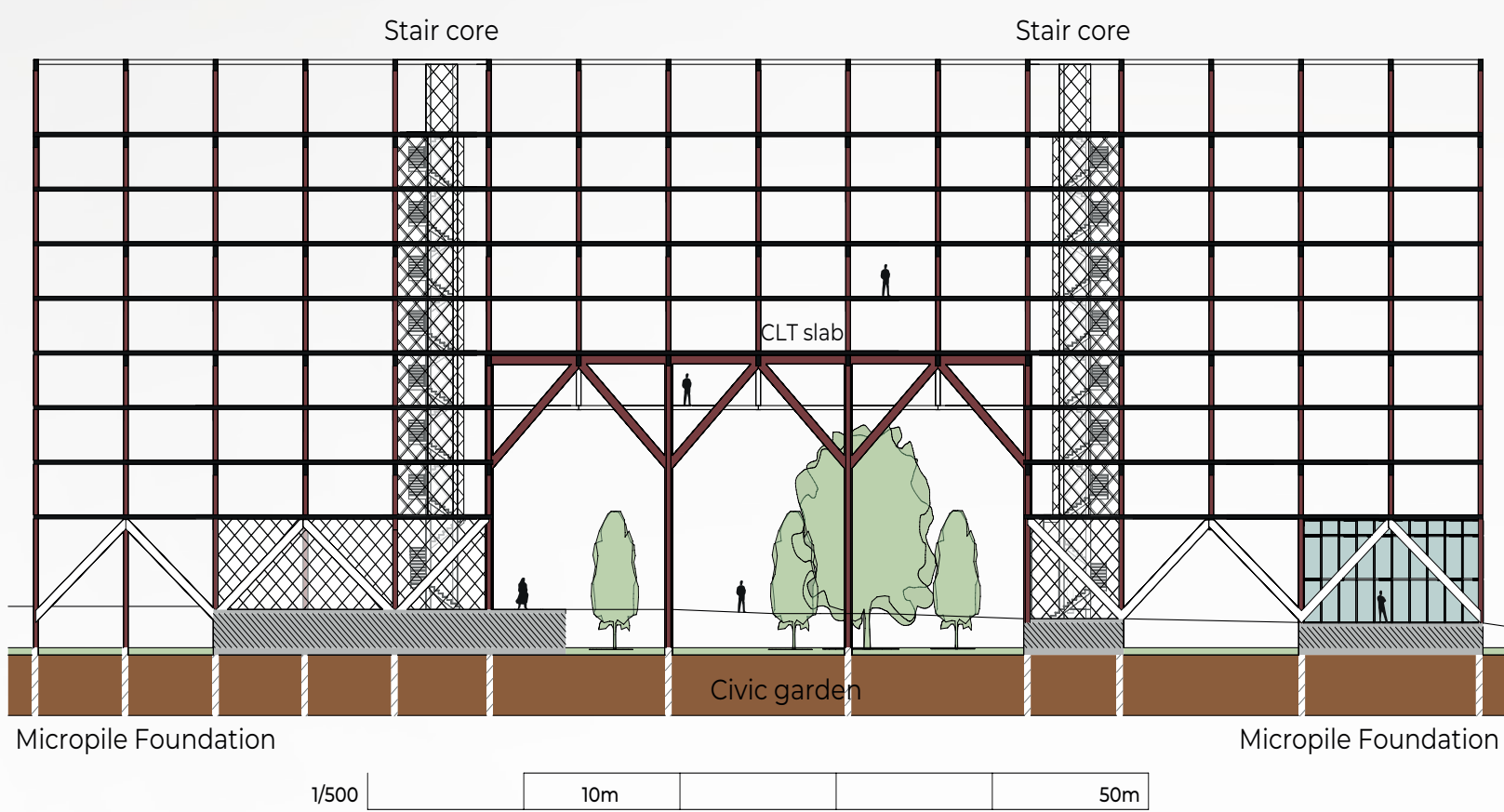
A kit of parts - modular repetition but rhythm in patterns.



Assembly is a civic act: each prefabricated part not only reduces on-site time and noise, but enables disassembly, reuse, and long-term environmental care.



Long section through Building A - a civic framework suspended on piloti.



40 weeks/10 months assembly process: Minimal waste, predictable cost, low energy demand, and future adaptability — public responsibility built in.

Foundation + SUD system: Concrete micropiles, SUD filtration, terrain coordination.
CLT Shell Assembly: Craned slabs and panels, dry joints.
Enclosure + Shared Infrastructure: Facade, roofs, communal zone.
Installation + Finishes: HVAC, plumbing, fittings, inspections.