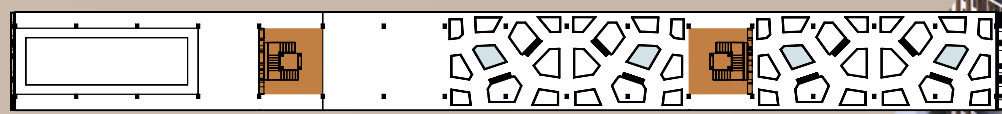


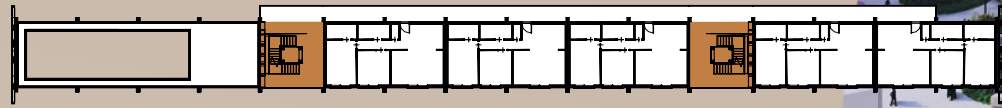
# La VERNEDA

CORRALA DE  
BARCELONA EUROPEAN 18

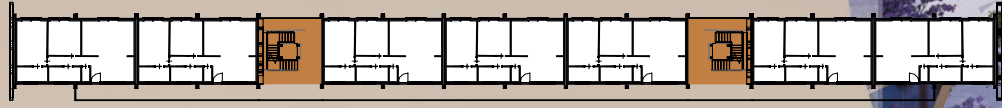
Rooftop. +26.20 m



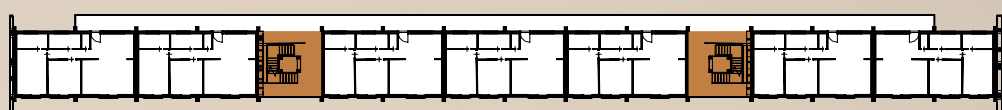
Level 7. +23.20 m



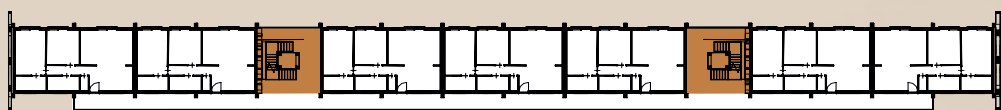
Level 6. +20.20 m



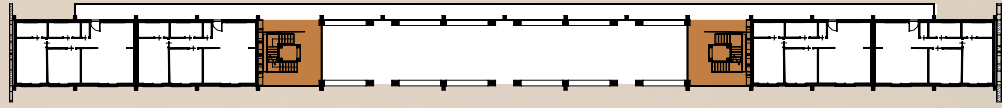
Level 5. +17.20 m



Level 4. +14.20 m



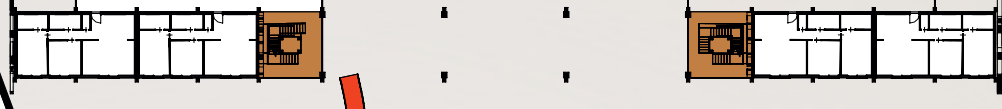
Level 3. +11.20 m



Level 2. +8.20 m



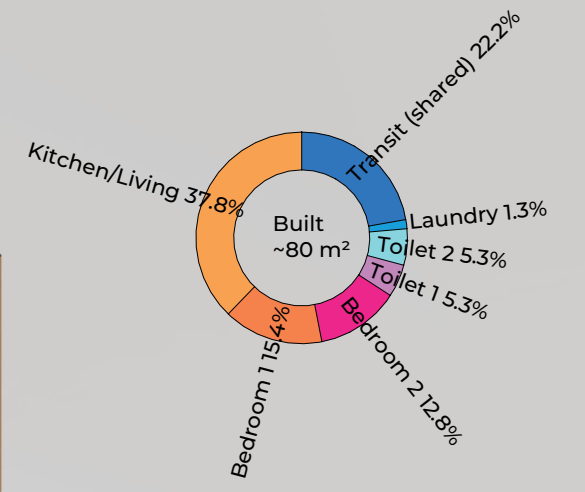
Level 1. +5.20 m



Ground Level. 0.00 m

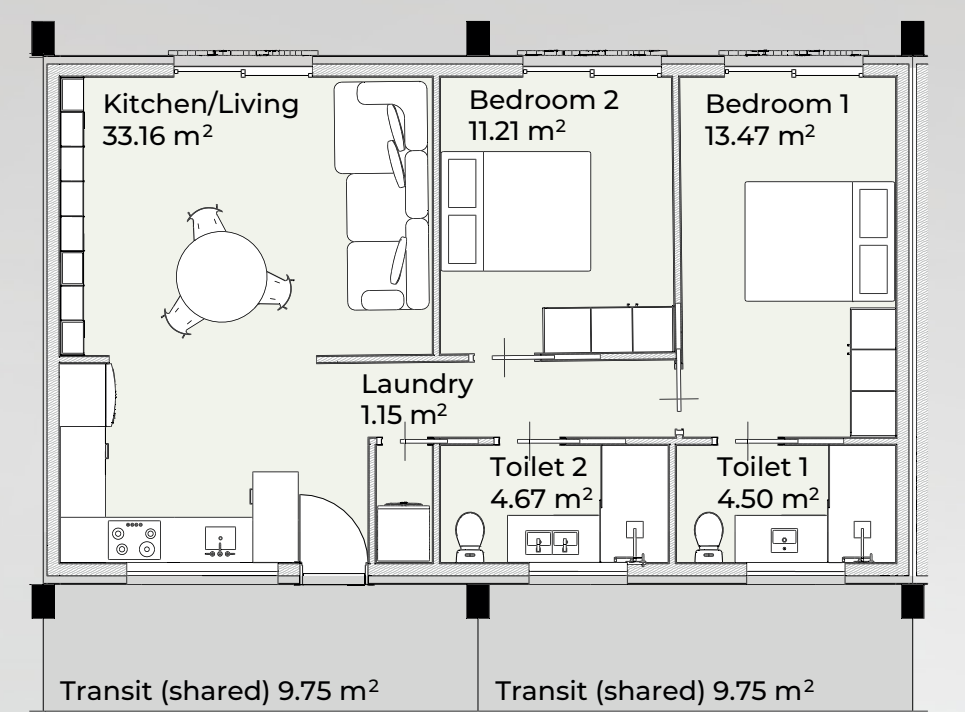


Plot Level. -2.75 m



**This sameness allows for difference.  
The unit can hold:**

- A grandmother and her student grandson.
- Two friends co-parenting.
- A single mother and a neighbor in need.
- A temporary caregiver and a long-term resident.



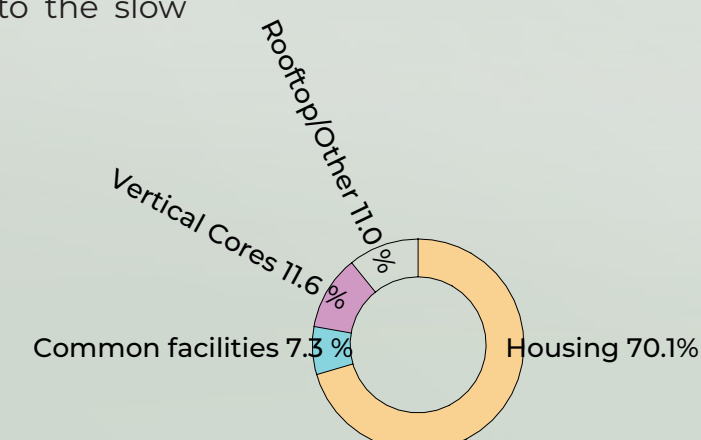
**A single typology, precisely designed to hold difference and rhythm.**

The project is built on one housing typology, not out of repetition, but out of conviction. At ~80 m² (including outdoor transit spaces), the unit balances privacy and coexistence. Two bedrooms, one en suite, the other with a shared but adjacent bathroom and a central living-kitchen space. Every room, including the kitchen-living area, opens onto the exterior through a large sliding glass doors, forming a series of flush French balconies.

No unit has its own outdoor surface by design, beyond the outdoor transit space. The goal is to bring residents outward: to shared gardens, to the collective pergolas, to the slow balconies and passageways of the building.

## COMMON SPACES

**Street Level and plot level**  
80.96 m² - Cooperative new main premises  
80.96 m² - Kindergarden  
80.96 m² - Gym  
80.96 m² - Bike and scooter parking



**2° level Casal de Barri**  
242.45 m² - Multipurpose community premises

**Total: 566.29 m²**

## Selected Species: Ecological Intention and Local Memory.

Low-maintenance, drought-resistant, and pollinatorfriendly.  
(the *Alnus glutinosa* also called "Verneda" is included as a symbolic link to LA VERNEDA)

### Trees:

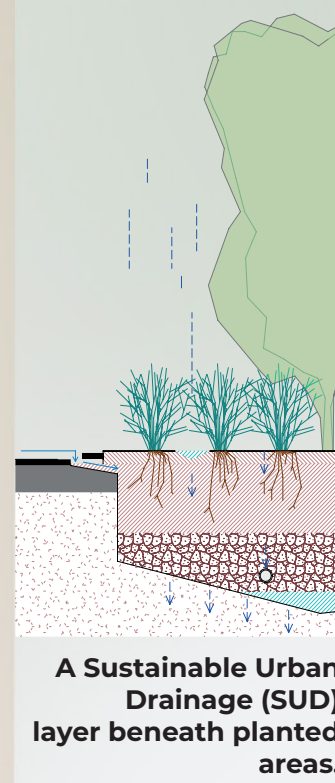
- 1-Prunus cerasifera
- 2-Cercis siliquastrum
- 3-Alnus glutinosa
- 4-Laurus nobilis

### Shrubs and Herbs

- 5-Acanthus mollis
- 6-Rosmarinus officinalis
- 7-Agave attenuata
- 8-Farfigium japonicum
- 9-Bulbine frutescens

### Grasses

- 10-Nassella tenuissima



A Sustainable Urban Drainage (SUD) layer beneath planted areas.

**The Casal de Barri "La Verneda" is not displaced but uplifted.**

The project builds directly above its roof, integrating it into the new civic level without erasing its autonomous identity.

Architecture is not born from form, but from a stance, a position toward the city, toward coexistence, and toward the political act of building.

